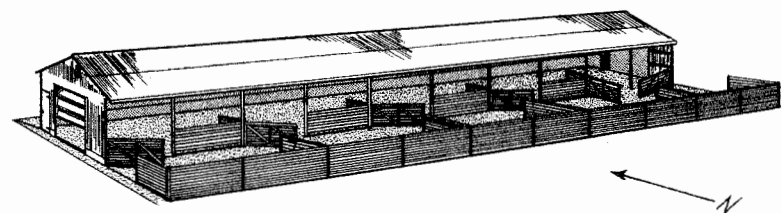


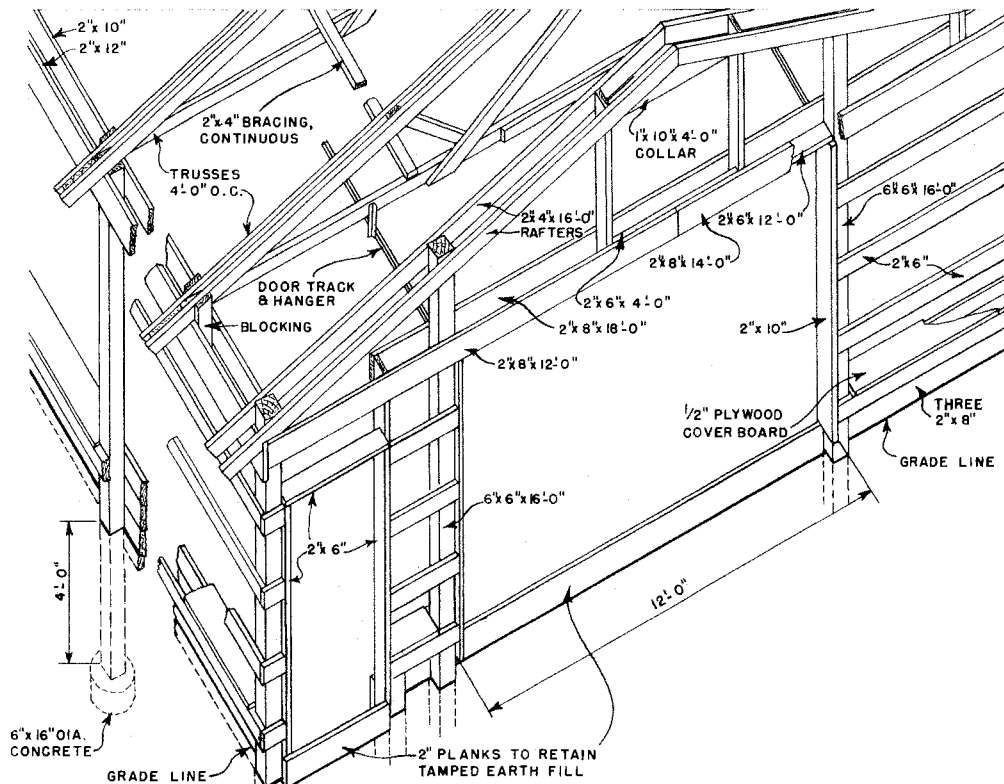
PLAN
SCALE: 3/16"=1'-0"



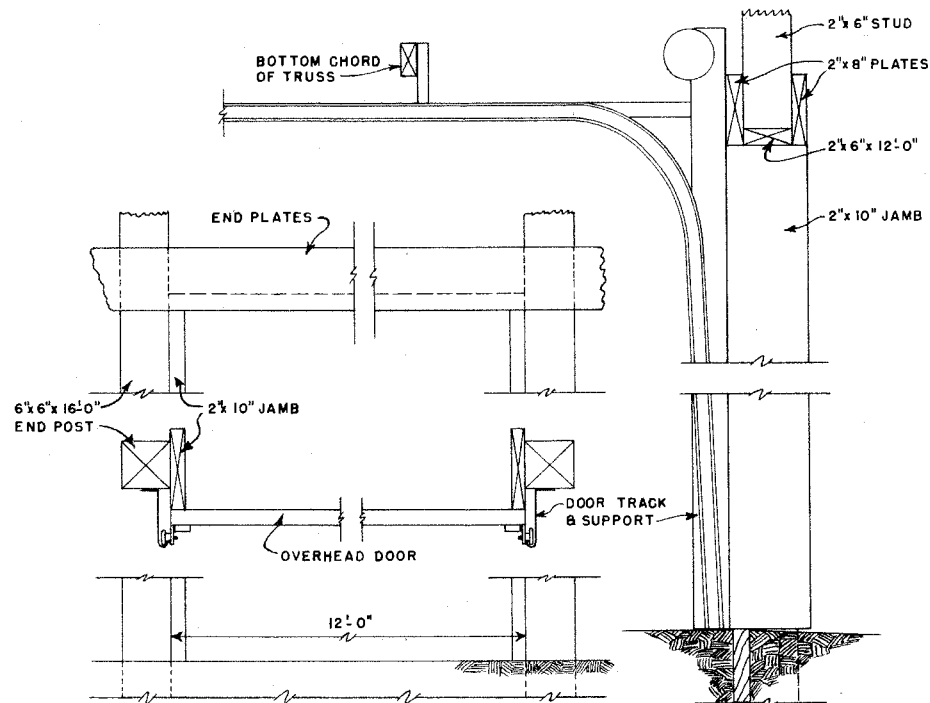
ALL POSTS AND PLANKS IN CONTACT WITH EARTH TO BE PRESSURE-TREATED WITH PRESERVATIVE.

* SET END WALL POSTS 3'-6" BELOW GRADE TO ALLOW FOR FRAMING.

LSU AgCenter <small>Research & Extension</small>			
SHEEP SHED			
USDA '60	EX. 5874	SHEET 1 OF 2	

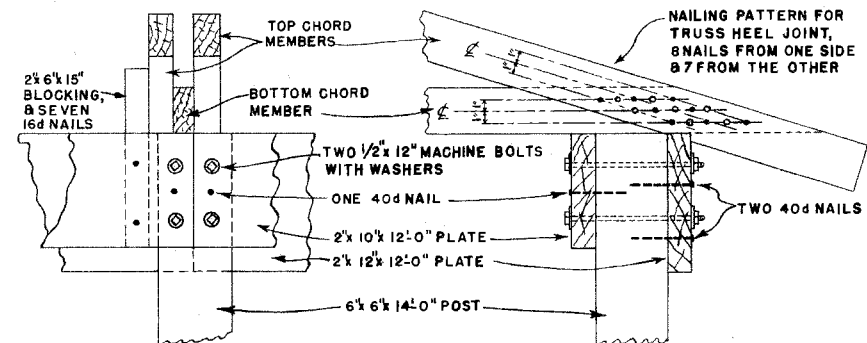


END FRAMING DETAIL
SCALE: 3/8"=1'-0"



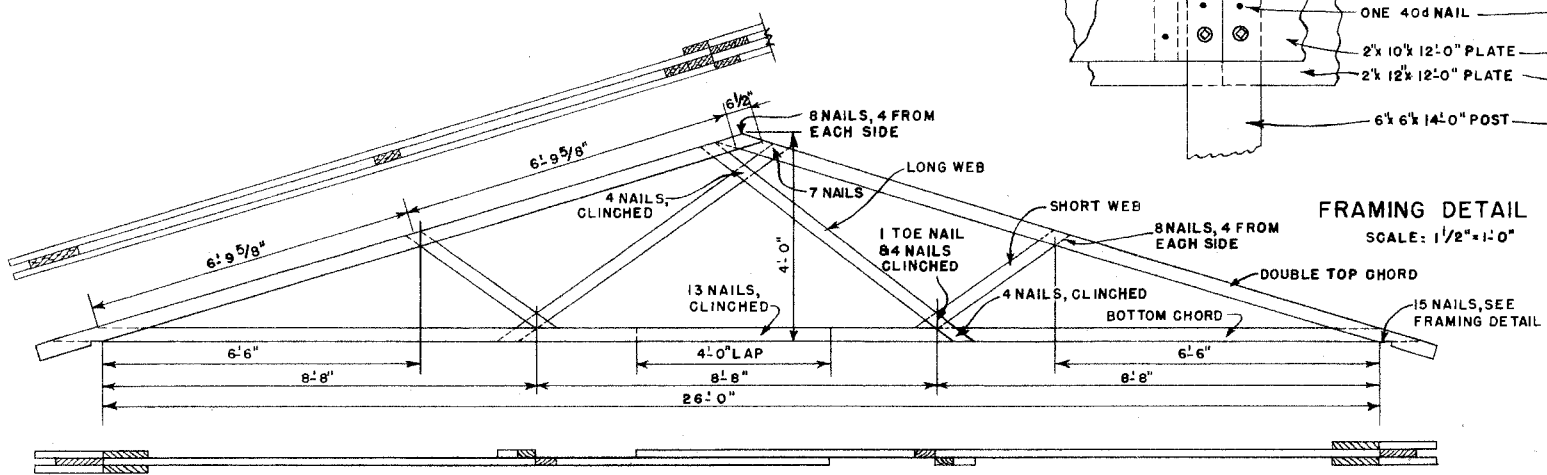
TYPICAL INSTALLATION FOR OVERHEAD DOORS

SEE MANUFACTURERS DIRECTIONS FOR DETAILS



FRAMING DETAIL

SCALE: 1/2"=1'-0"



TRUSS DETAIL

SCALE: 1/2"=1'-0"

ALL TRUSS MEMBERS ARE 2x4"
STRUCTURAL GRADE LUMBER
ALL NAILS ARE 20d

LSU AgCenter <small>Research & Extension</small>			
SHEEP SHED			
USDA	'60	EX. 5874	SHEET 2 OF 2

Disclaimer

This site makes available conceptual plans that can be helpful in developing building layouts and selecting equipment for various agricultural applications. These plans do not necessarily represent the most current technology or construction codes. They are not construction plans and do not replace the need for competent design assistance in developing safe, legal and well-functioning agricultural building system. The LSU Agriculture Center, the Mid-West Plan Service, the United States Department of Agriculture and none of the cooperating land-grant universities warranty these plans.