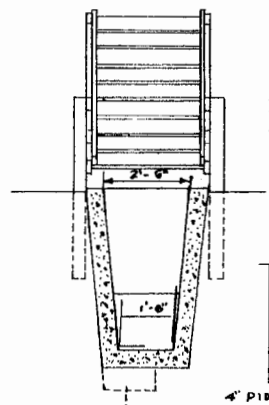
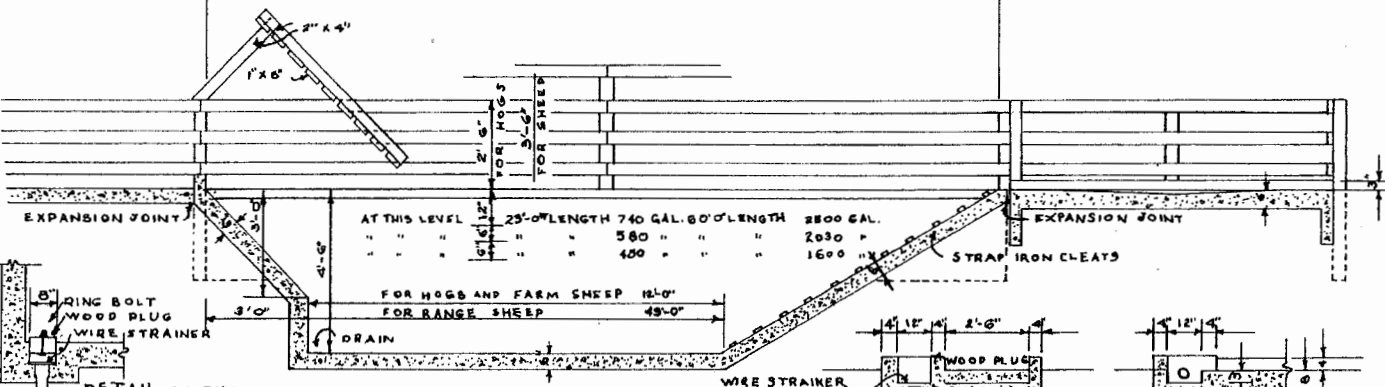


PLAN
SCALE $\frac{3}{8}$ " = 1'-0"
FOR HOGS & FARM SHEEP 25'-0"
FOR RANGE SHEEP 60'-0"



CROSS SECTION



LONGITUDINAL SECTION
SCALE $\frac{3}{8}$ " = 1'-0"

SECTION A-A
SECTION B-B
DETAIL SECTIONS OF THE SUMP

BILL OF MATERIALS


CONCRETE			
	25' LENGTH	60' LENGTH	DRAINING PEN
CEMENT	31 SACKS	72 SACKS	16 SACKS
SAND	2.25 CU. YDS.	3.25 CU. YDS.	1.35 CU. YDS.
GRAVEL	4.30 CU. YDS.	10.00 CU. YDS.	2.66 CU. YDS.

FITTINGS			
20 LIN. FT.	$\frac{1}{2}$ " x $\frac{1}{2}$ "	STRAP IRON FOR CLEATS	
SUFFICIENT	4"	DRAIN PIPE TO SUIT LOCATION	
14 LIN. FT.	2"	GALV. IRON PIPE FOR SUMP	
2 - 90°	2"	GALV. IRON ELBOWS FOR SUMP	
GALV. IRON WIRE STRAINERS		FOR SUMP & VAT	
1 - $\frac{1}{2}$ "		RING BOLT FOR VAT DRAIN.	

FENCE	
FOR HOGS	FOR SHEEP
15 - 4"x4"x6' POSTS	23 - 4"x4"x7' POSTS
45 - 2"x4"x12' RAILS	60 - 2"x4"x12' RAILS
2 - 2"x6"x12' BATTENS	2 - 2"x8"x14' BATTENS

2 - 2"x4"x10' BLIND
3 - 1"x6"x14'
4 PAIRS HEAVY 6" TEE HINGES

ADAPTED FROM
U.S.D.A. PLAN



LSU
AgCenter
ALL SECT. & DIVISIONS

DIPPING VAT

ENGINEER	SCALE
DRAWN BY U.S.D.A.	SHEET 1 OF 1
TRACED BY J.E.E.	DATE 1963 NO. 5390

Disclaimer

This site makes available conceptual plans that can be helpful in developing building layouts and selecting equipment for various agricultural applications. These plans do not necessarily represent the most current technology or construction codes. They are not construction plans and do not replace the need for competent design assistance in developing safe, legal and well-functioning agricultural building system. The LSU Agriculture Center, the Mid-West Plan Service, the United States Department of Agriculture and none of the cooperating land-grant universities warranty these plans.