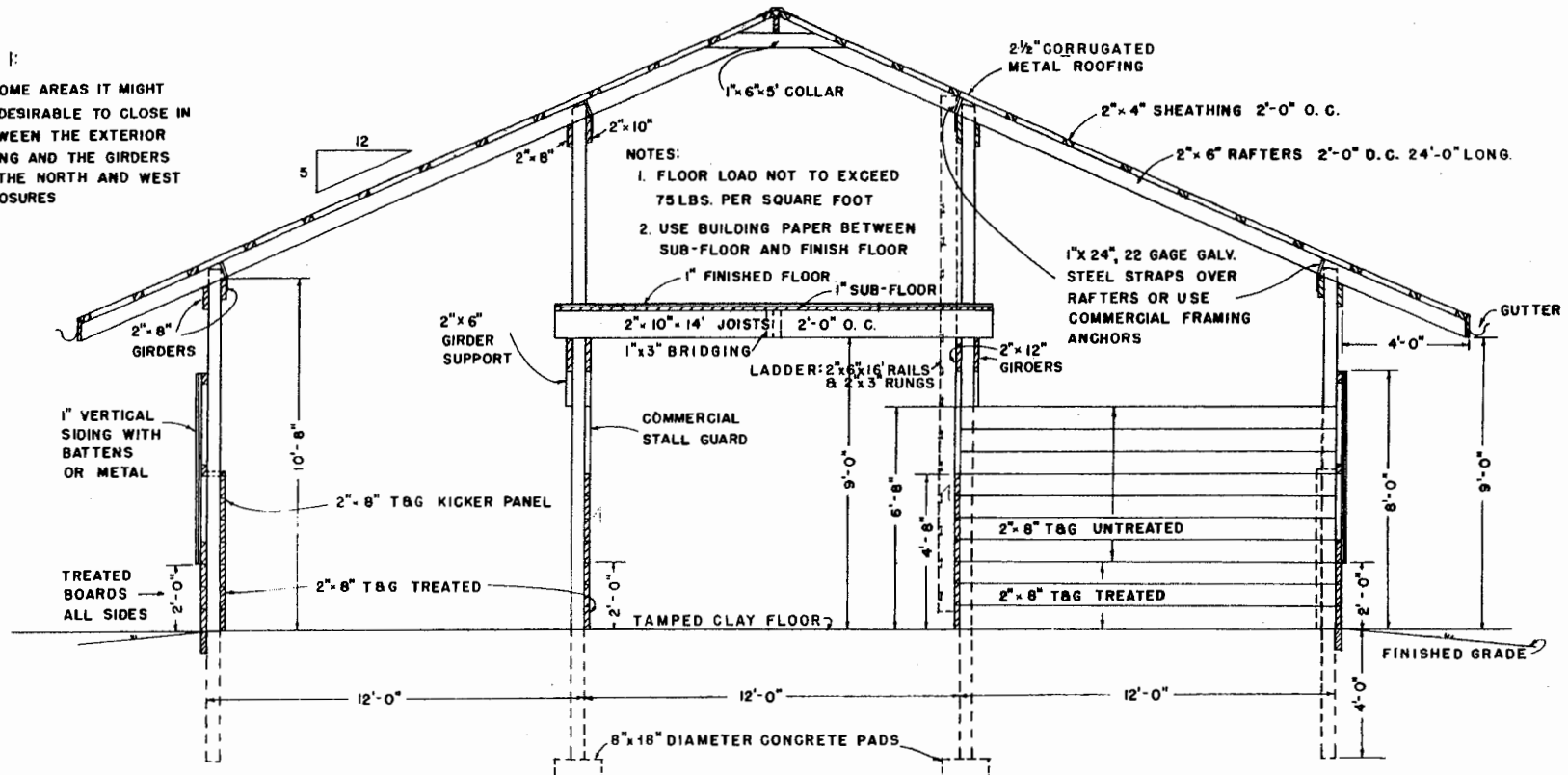


NOTE 1:

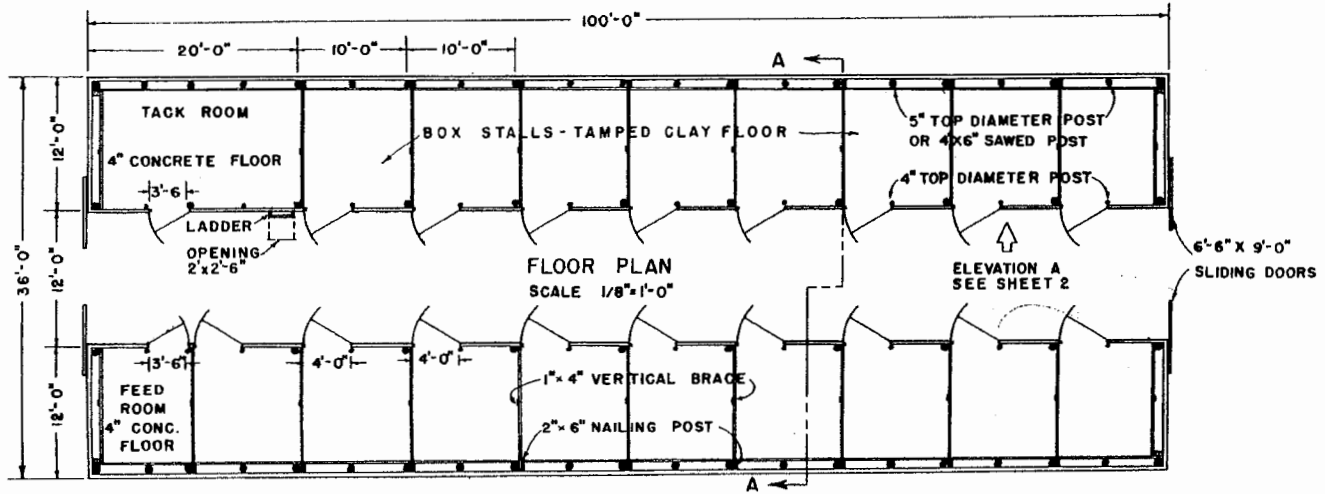
IN SOME AREAS IT MIGHT BE DESIRABLE TO CLOSE IN BETWEEN THE EXTERIOR SIDING AND THE GIRDERS ON THE NORTH AND WEST EXPOSURES



- NOTES:**
1. FLOOR LOAD NOT TO EXCEED 75 LBS. PER SQUARE FOOT
 2. USE BUILDING PAPER BETWEEN SUB-FLOOR AND FINISH FLOOR


SECTION A-A
SCALE 3/8"=1'-0"

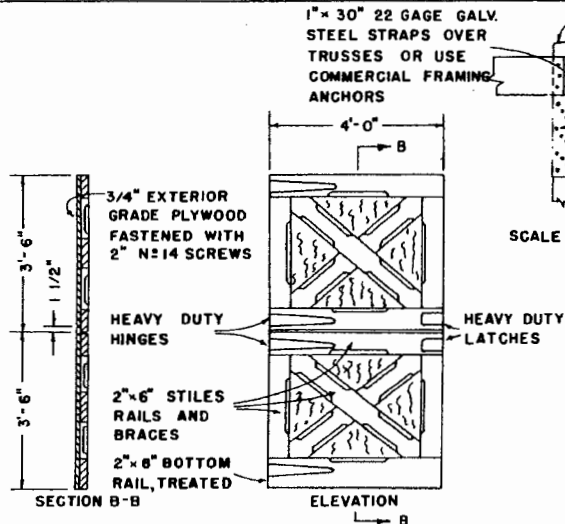
NOTE: ALL POSTS TO BE PRESSURE-TREATED WITH PRESERVATIVE TO A RETENTION OF 8 POUNDS PER CUBIC FOOT.



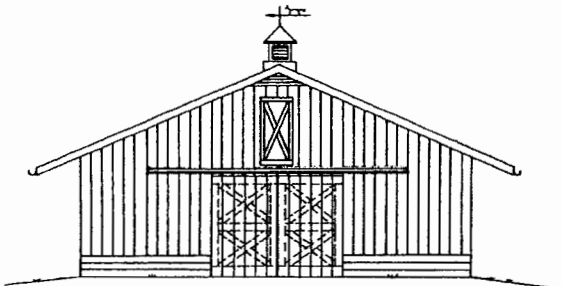
FLOOR PLAN
SCALE 1/8"=1'-0"

ELEVATION A
SEE SHEET 2

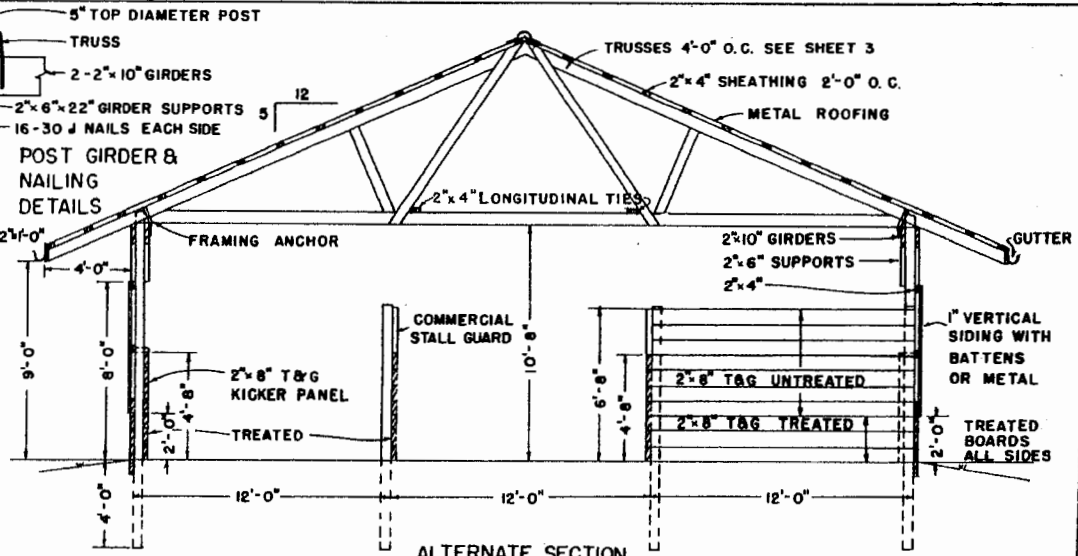
		
HORSE BARN-17 STALL		
VA. '67	EX. 6011	SHEET 1 OF 3



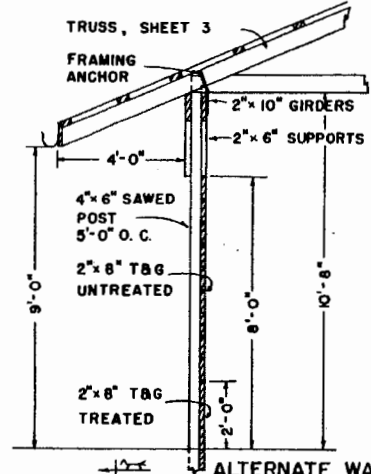
STALL DOOR DETAILS
SCALE 1/2" = 1'-0"



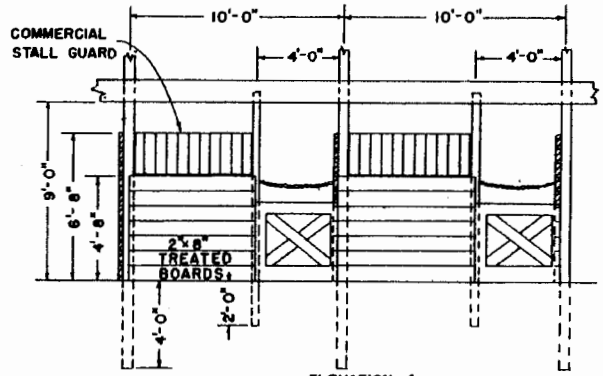
END ELEVATION
SCALE 1/8" = 1'-0"



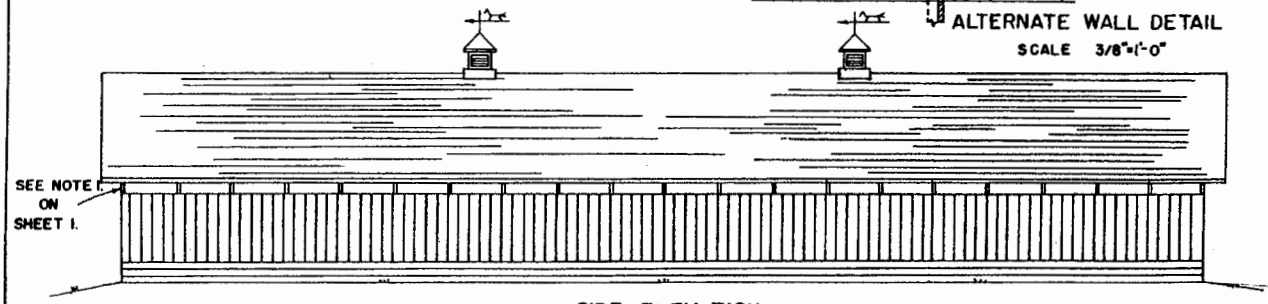
ALTERNATE SECTION
A - A
SCALE 1/4" = 1'-0"



ALTERNATE WALL DETAIL
SCALE 3/8" = 1'-0"



ELEVATION A
STALL DETAIL
SCALE 1/4" = 1'-0"

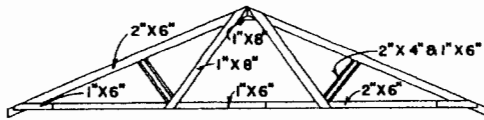


SIDE ELEVATION
SCALE 1/8" = 1'-0"

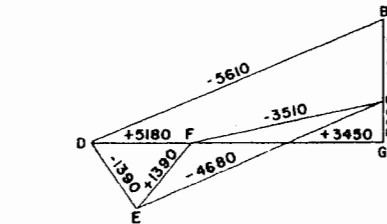
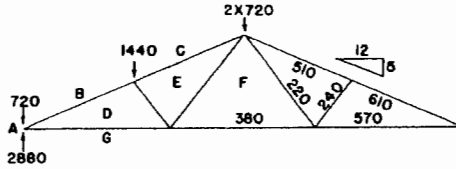
SEE NOTE ON SHEET 1.



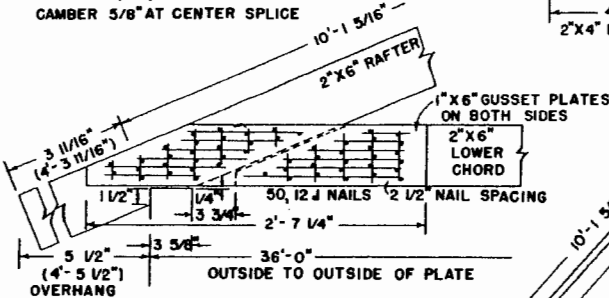
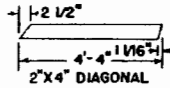
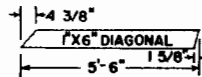
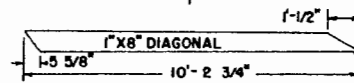
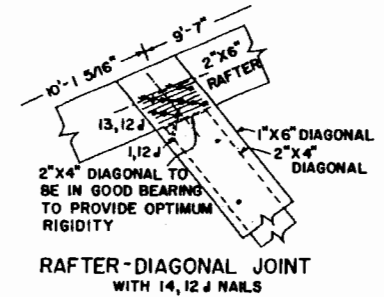
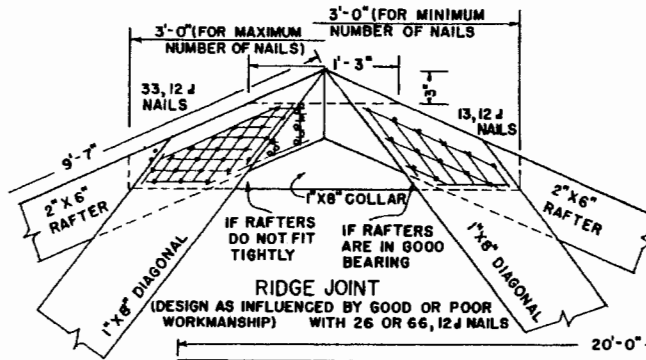
36-FT SPAN, 5 IN 12 PITCH, NAILED TRUSSED RAFTER (NO CEILING) SPACED 4 FT. ON CENTER



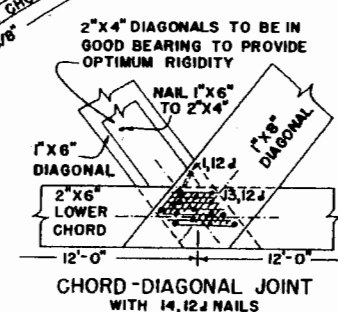
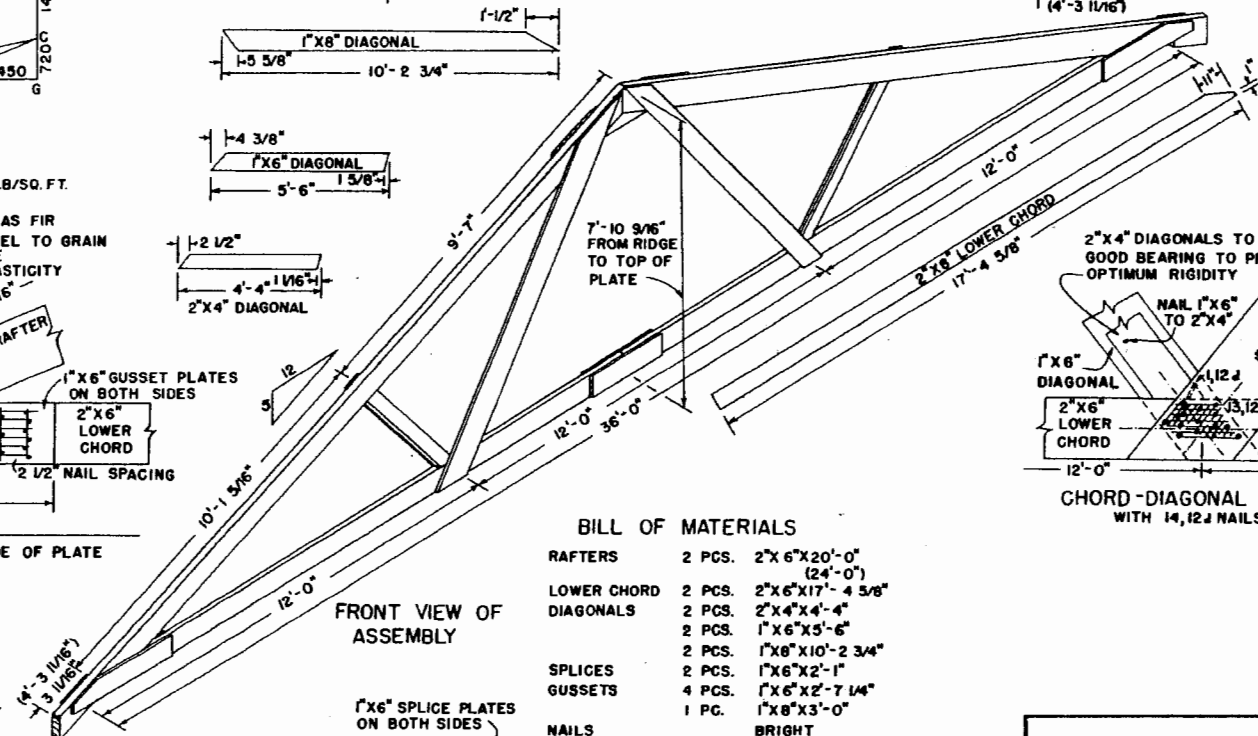
VIEW OF FRONT OF ASSEMBLY



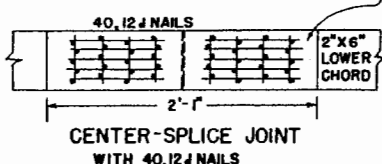
DEAD LOAD & LIVE LOAD ON ROOF: 40 LB/SQ. FT.
 TRUSSED RAFTERS SPACED 4'-0" O.C.
 LUMBER #1 SOUTHERN PINE OR DOUGLAS FIR
 C=135 PSI COMPRESSION PARALLEL TO GRAIN
 F=1500 PSI MODULUS OF RUPTURE
 E=1760000 PSI MODULUS OF ELASTICITY
 CAMBER 5/8" AT CENTER SPLICE



HEEL JOINT WITH 50, 12J NAILS



NOTES:
 USE HELICALLY THREADED NAILS FOR PERMANENTLY TIGHT JOINTS THROUGHOUT STRUCTURE
 USE HARDENED NAILS IN DRY SOUTHERN PINE
 DRIVE ALL NAILS FROM FRONT EXCEPT THOSE SHOWN AS (O)
 USE TEMPLATES FOR LOCATING ALL NAILS TO ASSURE MAXIMUM EFFICIENCY AND EFFECTIVENESS



BILL OF MATERIALS

RAFTERS	2 PCS.	2"x6"x20'-0" (24'-0")
LOWER CHORD	2 PCS.	2"x6"x17'-4 5/8"
DIAGONALS	2 PCS.	2"x4"x4'-4"
	2 PCS.	1"x6"x5'-6"
	2 PCS.	1"x8"x10'-2 3/4"
SPLICES	2 PCS.	1"x6"x2'-1"
GUSSETS	4 PCS.	1"x6"x2'-7 1/4"
	1 PC.	1"x8"x3'-0"
NAILS	230-270 PCS.	12J 3 1/4"x0.148" (44 LBS.)
OR		
NAILS	230-270 PCS.	12J 3 1/4"x0.135" (37 LBS.)

LSU
AgCenter
 RESEARCH • EXTENSION

HORSE BARN-17 STALL

VA. '67 EX. 6011 SHEET 3 OF 3

Disclaimer

This site makes available conceptual plans that can be helpful in developing building layouts and selecting equipment for various agricultural applications. These plans do not necessarily represent the most current technology or construction codes. They are not construction plans and do not replace the need for competent design assistance in developing safe, legal and well-functioning agricultural building system. The LSU Agriculture Center, the Mid-West Plan Service, the United States Department of Agriculture and none of the cooperating land-grant universities warranty these plans.