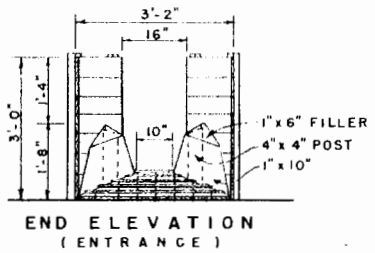
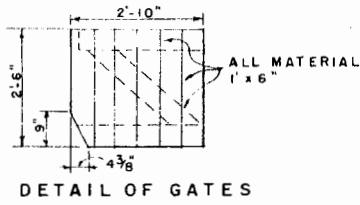


PLAN VIEW OF CHUTE NO 1
SCALE: 3/8" = 1'-0"

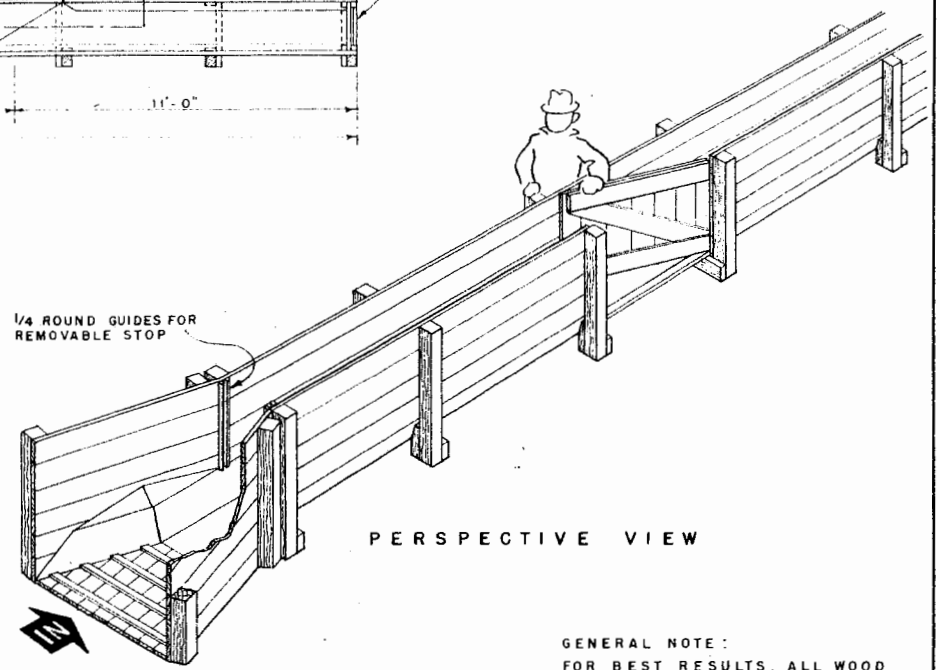


END ELEVATION (ENTRANCE)

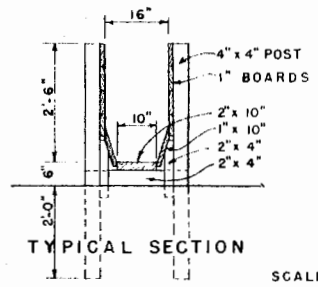


DETAIL OF GATES

1/4 ROUND GUIDES FOR REMOVABLE STOP

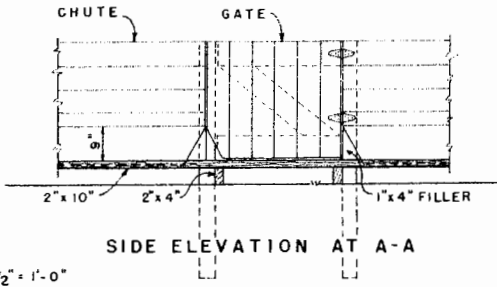


GENERAL NOTE:
FOR BEST RESULTS, ALL WOOD IN CONTACT WITH THE GROUND SHOULD BE PRESSURE-TREATED WITH PRESERVATIVE.

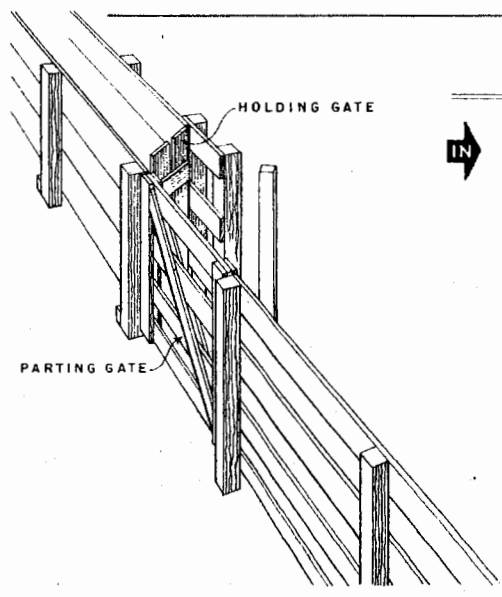


TYPICAL SECTION

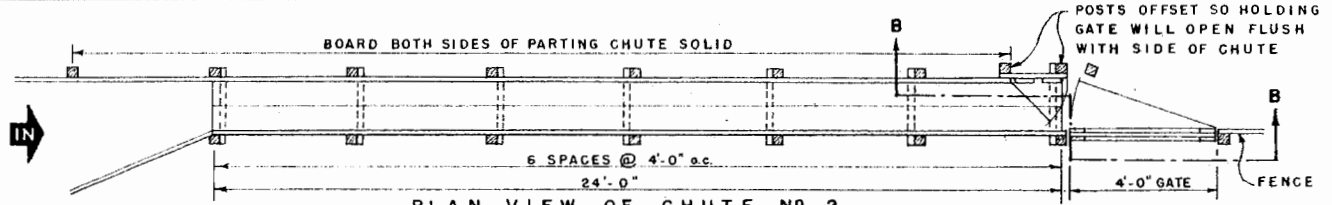
SCALE: 1/2" = 1'-0"



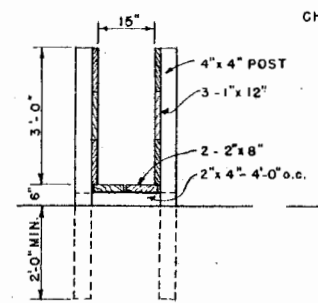
SIDE ELEVATION AT A-A



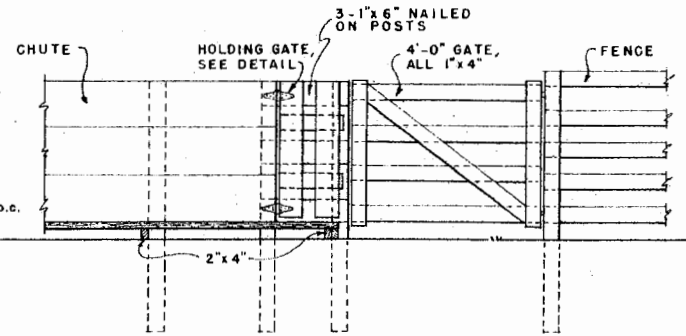
PERSPECTIVE VIEW SHOWING GATES



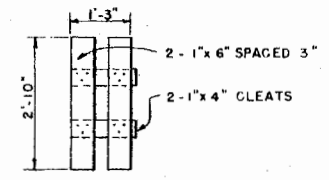
PLAN VIEW OF CHUTE NO 2
SCALE: 3/8" = 1'-0"



TYPICAL SECTION THRU CHUTE



SIDE ELEVATION AT B-B
SCALE: 1/2" = 1'-0"



DETAIL OF HOLDING GATE



PARTING CHUTES FOR SHEEP

Disclaimer

This site makes available conceptual plans that can be helpful in developing building layouts and selecting equipment for various agricultural applications. These plans do not necessarily represent the most current technology or construction codes. They are not construction plans and do not replace the need for competent design assistance in developing safe, legal and well-functioning agricultural building system. The LSU Agriculture Center, the Mid-West Plan Service, the United States Department of Agriculture and none of the cooperating land-grant universities warranty these plans.