

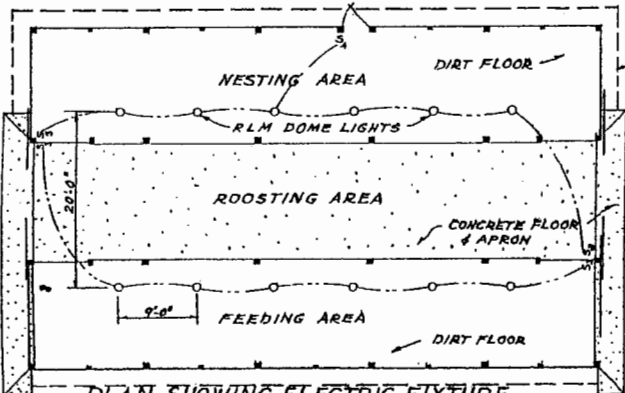
- ELECTRICAL DEMAND:**
- ① LIGHTING 1.5 WATTS PER SQUARE FOOT  
2 CIRCUITS - 20A, 110V.
  - ② CONVENIENCE OUTLETS  
2 CIRCUITS - 20A, 110V.
  - ③ FANS  
1 CIRCUIT - 20A, 110V.
- POSSIBLE ADDITIONS:**
- ① EGG COOLER  
1 CIRCUIT - 20A, 120V.
  - ② SPARES
  - ③ FEEDERS  
1 CIRCUIT - 20A, 110V.
  - ④ EGG CLEANER  
1 CIRCUIT - 20A, 110V.

**BREAKER PANEL**

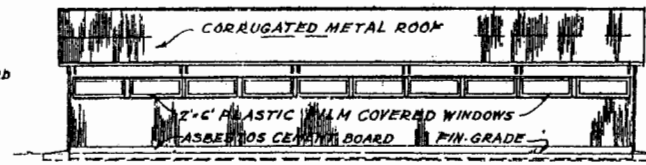
MAIN DISCONNECT 60A

① 220V	② 220V
③ 110V	④ 110V
⑤ 110V	⑥ 110V
⑦ 110V	⑧ 110V

PLAN SCALE: 1/4" = 1'-0"



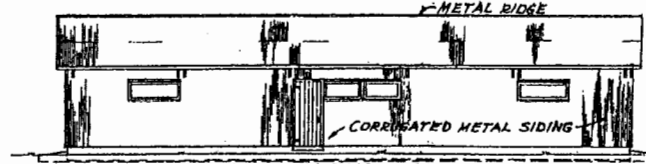
PLAN SHOWING ELECTRIC FIXTURE LOCATIONS SCALE: 3/32" = 1'-0"



SOUTH ELEVATION SCALE: 3/32" = 1'-0"



EAST ELEVATION SCALE: 3/32" = 1'-0"



NORTH ELEVATION SCALE: 3/32" = 1'-0"

**LSU**  
AgCenter  
Research & Extension

**POULTRY HOUSE**

USDA-59 EX. 5871 SHEET 1 OF 2



## Disclaimer

This site makes available conceptual plans that can be helpful in developing building layouts and selecting equipment for various agricultural applications. These plans do not necessarily represent the most current technology or construction codes. They are not construction plans and do not replace the need for competent design assistance in developing safe, legal and well-functioning agricultural building system. The LSU Agriculture Center, the Mid-West Plan Service, the United States Department of Agriculture and none of the cooperating land-grant universities warranty these plans.