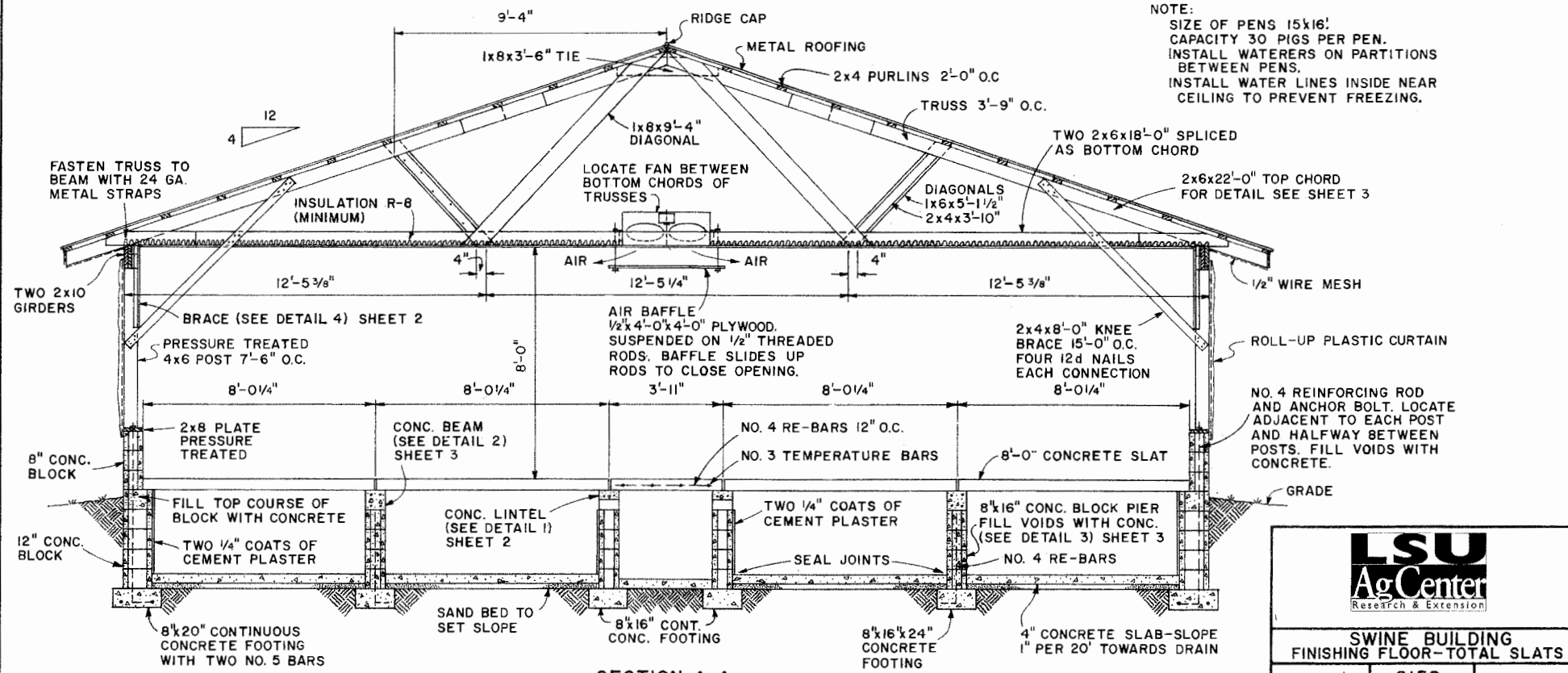



FOUNDATION AND FLOOR PLAN
SCALE: 1/8"=1'-0"



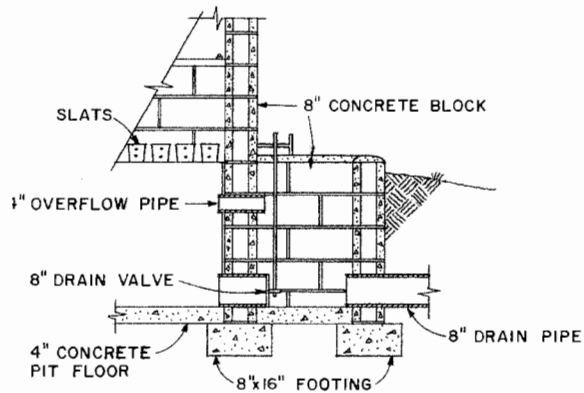
SECTION A-A
SCALE: 3/8"=1'-0"

BASED ON: N.C. STATE UNIV. PLAN NO. 528

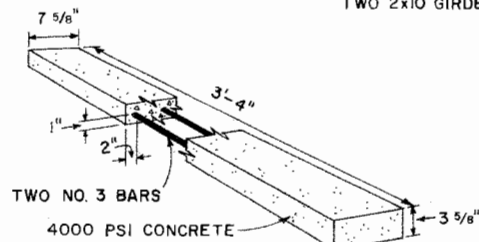


LSU
AgCenter
Research & Extension

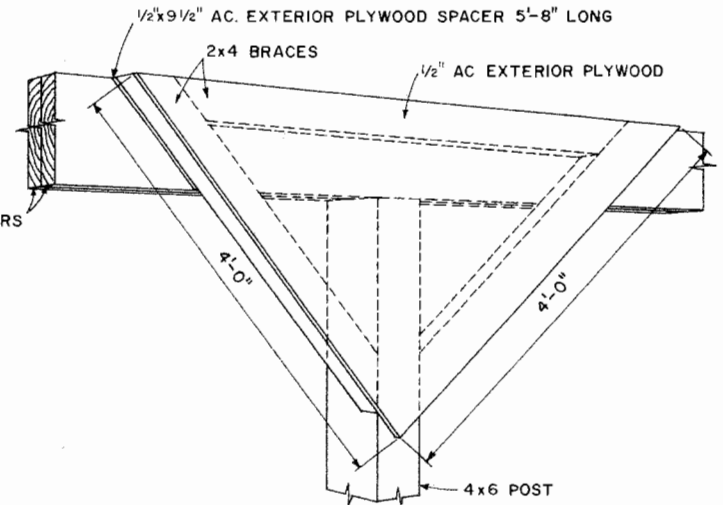
SWINE BUILDING		
FINISHING FLOOR-TOTAL SLATS		
N.C. '73	6159	SHEET 1 OF 3



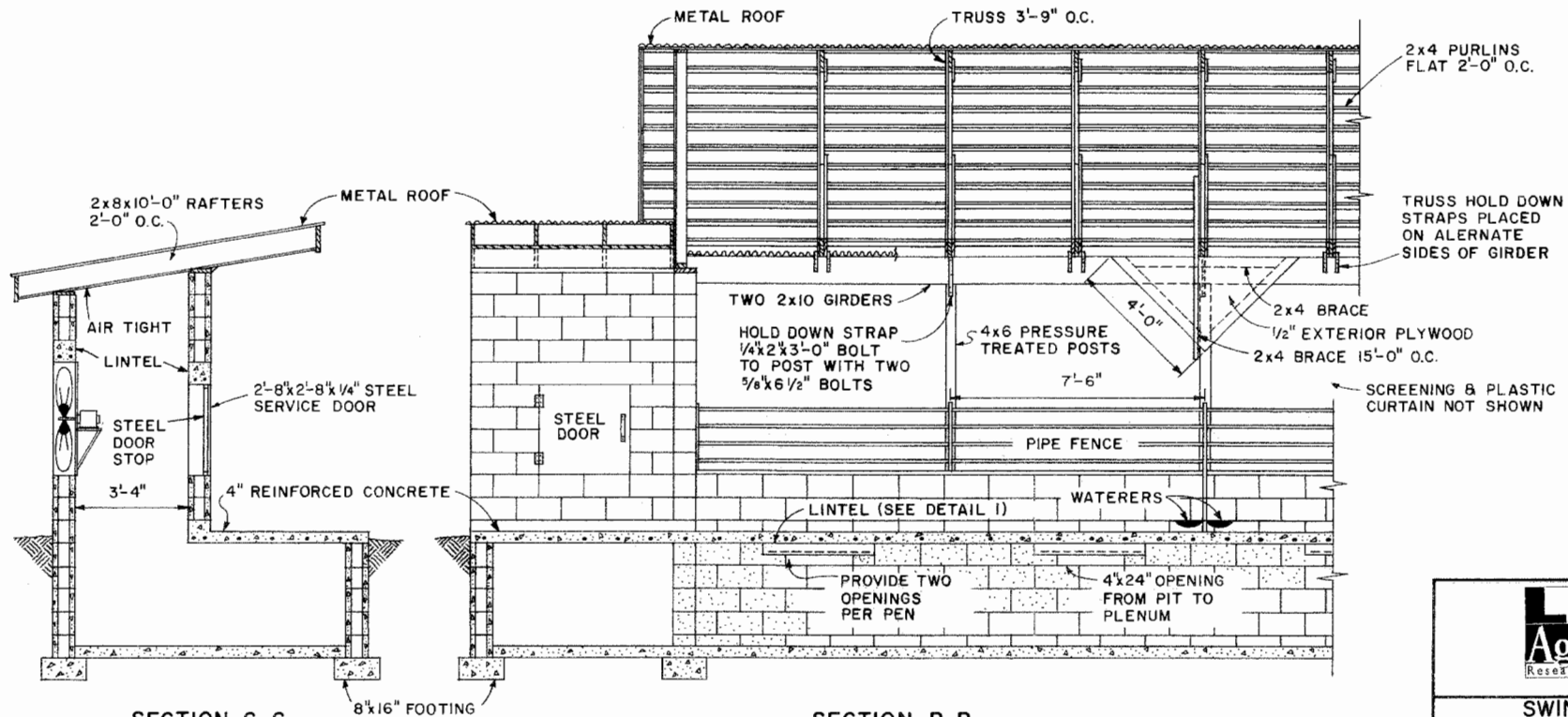
SECTION D-D
PIT DRAIN DETAIL
SCALE: 1/2" = 1'-0"



CONCRETE LINTEL DETAIL NO. 1
PERSPECTIVE



POST BRACING DETAIL 4
PERSPECTIVE



SECTION C-C
SCALE: 3/8" = 1'-0"

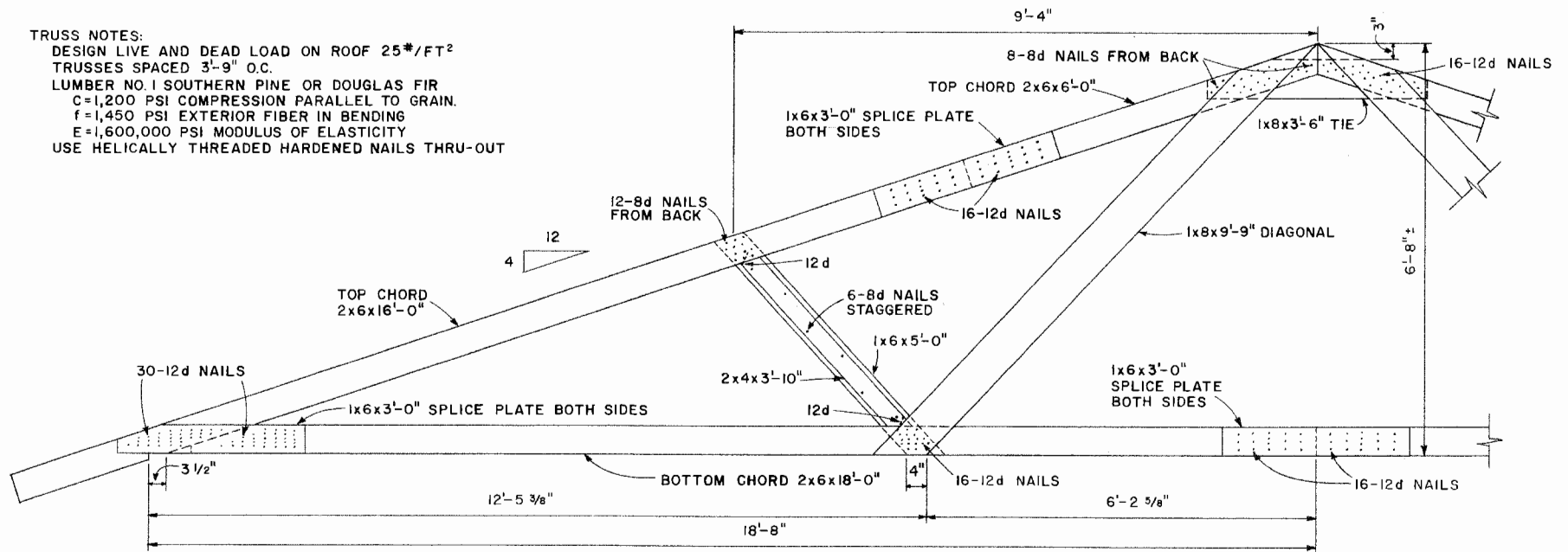
SECTION B-B
SCALE: 3/8" = 1'-0"



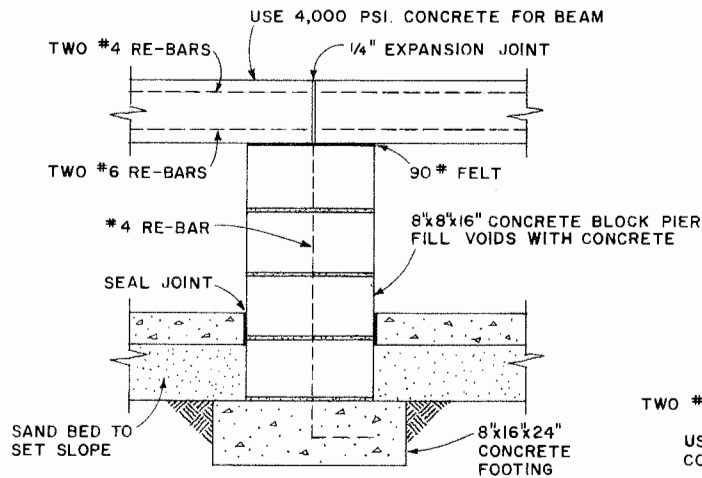
SWINE BUILDING
FINISHING FLOOR-TOTAL SLATS

N.C. '73 6159 SHEET 2 OF 3

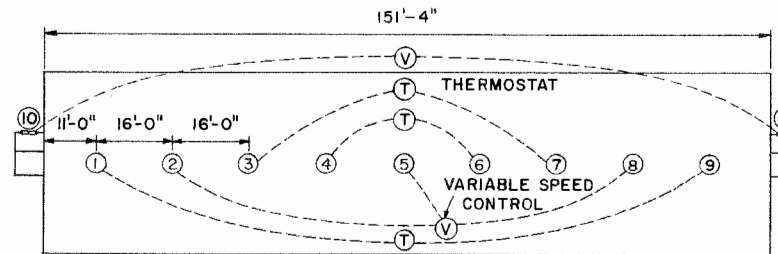
TRUSS NOTES:
 DESIGN LIVE AND DEAD LOAD ON ROOF 25*/FT²
 TRUSSES SPACED 3'-9" O.C.
 LUMBER NO. 1 SOUTHERN PINE OR DOUGLAS FIR
 C=1,200 PSI COMPRESSION PARALLEL TO GRAIN.
 F=1,450 PSI EXTERIOR FIBER IN BENDING
 E=1,600,000 PSI MODULUS OF ELASTICITY
 USE HELICALLY THREADED HARDENED NAILS THRU-OUT



TRUSS DETAIL
 SCALE: 3/4"=1'-0"



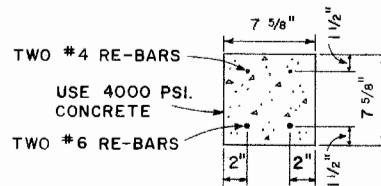
PIER DETAIL-3
 SCALE: 1"=1'-0"



FANS 2,5,8-VARIABLE SPEED-4000 TO 5000 CFM AT 1/8" S.P.
 FANS 1,3,4,6,7,9-5000 CFM AT 1/8" S.P.
 FANS 10,11-VARIABLE SPEED-8500 CFM AT 1/8" S.P.

NOTE:
 BALANCE THE UNDER SLAT VENTILATION BY RESTRICTING OPENINGS CLOSEST TO THE FANS. SET FOR 500 TO 600 FPM WITH FANS RUNNING AT FULL SPEED

FAN LAYOUT



DETAIL-2
 CONCRETE BEAM SECTION
 SCALE: 1 1/2"=1'-0"



Disclaimer

This site makes available conceptual plans that can be helpful in developing building layouts and selecting equipment for various agricultural applications. These plans do not necessarily represent the most current technology or construction codes. They are not construction plans and do not replace the need for competent design assistance in developing safe, legal and well-functioning agricultural building system. The LSU Agriculture Center, the Mid-West Plan Service, the United States Department of Agriculture and none of the cooperating land-grant universities warranty these plans.